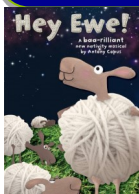


Walpole Cross Keys Primary School

Weekly Newsletter - 17th December 2021



Well done to all the pupils who took part in our Christmas performances of **Hey Ewe!** They were all amazing and we hope everyone enjoyed watching the children perform as much as we did. Thank you to all the staff who worked so hard to put this show together.

We all enjoyed **Beauty and the Beast** yesterday at the King's Lynn Corn Exchange, as always they put on a fabulous show. We all came back and had lots of fun at our class **Christmas parties** for the rest of the afternoon. Thank you to all the parents and carers who donated towards the cost of the party food and drink.



Thank you to our **PTA** for donating a selection box for each pupil to enjoy this Christmas.

Today was our final school day of 2021, we hope you all have the most wonderful Christmas and we look forward to welcoming you back in the New Year on **Wednesday 5th January 2022**.

As always, we want to ensure that your experience at Walpole Cross Keys Primary is a positive one. If you have any concerns, in the first instance, please telephone (01553 828680) or email the school office (office@walpolecrosskeysprimary.co.uk) or speak with the **class teacher**.

Best Wishes,
Ms J. Borley, Executive Head Teacher

- ♦ Stars: Nelly (Yr1), Josie (Yr2) & Archie (Yr5)
- ♦ Kindness: Leo (Yr1), Taylor (Yr2) & Grace (Yr4)
- ♦ Handwriting: Layla (YrR)
- ♦ Thank you winners: Adam (Yr1), Taylor (Yr2), Evan (Yr6) & Mrs Robinson



W/c 3rd January....

Monday
SCHOOL CLOSED
Tuesday
SCHOOL CLOSED
Wednesday
BACK TO SCHOOL
PTA tuck shop 3:15pm
Friday
Class 1 & 3 PE day
No football club

Attendance

Reception: 100%
Year 1: 97.22%
Year 2: 91.67%
Year 3: 100%
Year 4: 90.74%
Year 5: 84.72%
Year 6: 93.65%

Whole school: 94.13%

Congratulations Year R & 3 (100%)

Attendance bear winners: Class 1

Please check final page
for future diary dates.

Tel: 01553 828680 Email: office@walpolecrosskeysprimary.co.uk
Governors: chairofgov@clenchwartonprimary.co.uk
www.walpolecrosskeysprimary.co.uk

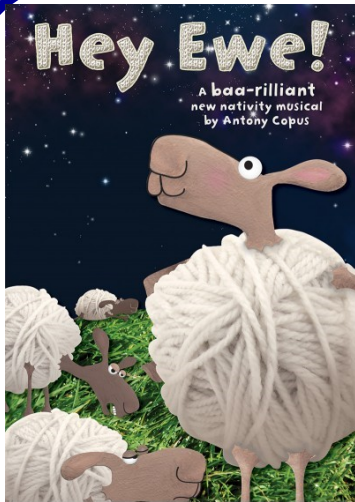


Class 3 Roman Day Tuesday 7th December



Christmas Jumper Day Friday 10th December





Hey Ewe!

Tuesday 14th and Wednesday 15th December



Class Christmas Parties

Thursday 16th December



w/c 3rd January menu:

LUNCHTIME CO®
Commencing: 8th Nov, 29th Nov, 3rd Jan, 24th Jan, 21st Feb, 14th March
Allergen Key: Barley (B), Celery (C), Egg (E), Fish (F), Gluten (G), Lapsin (L), Milk (MK), Mustard (M), Sesame Seeds (SE), Soya (SO), Sulphites (S), Wheat (W)

Week 2

Monday

Tuesday

Wednesday

Thursday

Friday

Main Meal

Meat Free

Jackets

Lunchtime Lunchbox

Desserts

SCHOOL CLOSED

Sticky Texan Chicken served with Golden Vegetable Rice and Pitta Slice (G) (W) (B) (C) (SO)	Farm Assured Roast Chicken with Potatoes, Seasonal Vegetables, Stuffing and Gravy (G) (W)	Crispy Fish Fillet served with Chips, Garden Peas and Baked Beans and Tomato Ketchup (G) (W) (F)
Classic Mac n' Cheese with Fresh Salad and Pitta Slice (G) (W) (MK)	Quorn Roast with Potatoes, Seasonal Vegetables, Stuffing and Gravy (G) (W) (E)	Vegetable Nuggets served with Chips, Garden Peas and Baked Beans and Tomato Ketchup (G) (W)
Jacket Potato with Cheese and Baked Beans served with Fresh Salad (MK)	Jacket Potato with Cheese and Baked Beans served with Fresh Salad (MK)	Jacket Potato with Cheese and Baked Beans served with Fresh Salad (MK)
Tuna Mayo Roll Pizza Finger Salad Sticks Fresh Sliced Fruit Oaty Bar (G) (W) (MK) (E) (SE) (F)	Cheese Roll Pasta Salad Salad Sticks Fresh Sliced Fruit Banana Cake (G) (W) (MK) (E) (SE)	Ham Roll Chicken Strips Salad Sticks Fresh Sliced Fruit Shortbread (G) (W) (MK) (SE)
Choose One of Our Fabulous Deserts Oaty Bar Fruit Yogurt & Coulis Fresh Fruit (G) (W) (E) (MK)	Choose One of Our Fabulous Deserts Banana Cake Fruit Yogurt & Coulis Fresh Fruit (G) (W) (E) (MK)	Choose One of Our Fabulous Deserts Ice Cream and Fruit Sauce Fruit Yogurt & Coulis Fresh Fruit (MK)

Available every day:

A selection of fresh vegetables and tasty salad

Delicious freshly baked bread

Fruit platter and natural yogurt with toppings



If your child would like a school lunch please order for the whole week using **ParentPay**, the deadline for orders is midnight on Sunday. If you miss the deadline please email the office by 9am on Monday with your child's choices for the week.
Thank you



✓ Please ensure your child's PE kit is kept in school all week from Monday to Friday.

✓ Order school lunches for the week by midnight each Sunday (ParentPay).

Diary Dates

Please be aware that dates are for guidance only and are subject to change

Monday 20th December to Monday 3rd January	School Closed—Christmas Break
Tuesday 4th January	School Closed—Inset Day
Tuesday 18th January	Yr 1 & 2 Active Kids @ Lynnsport *letter to follow*
	School Nurse visiting Year R and Year 6 *letters sent to parents/carers on 13/12/2021*
Wednesday 9th February	Yr5&6 Tag Rugby @ West Norfolk Rugby Club *letter to follow*
Monday 14th to Friday 18th February	School Closed—half-term break

All staff would like to take this opportunity to wish you a very happy Christmas and a wonderful New Year.

