

# Walpole Cross Keys Primary School

## Weekly Newsletter - 2nd July 2021



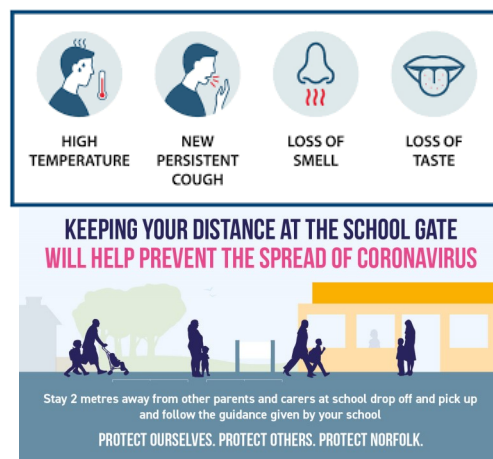
This week the pupils have completed a number of assessments, we are really impressed with how they all coped and tried their best. Well done everyone.



Year R parents/carers, keep your eyes peeled in Tuesday's edition of the Eastern Daily Press newspaper as you might spot some familiar faces,

Our school buildings remain closed to parents/carers therefore if you have any concerns please contact our school office via phone **(01553 828680)** or email **office@walpolecrosskeysprimary.co.uk**.

Best Wishes,  
Ms J. Borley  
Executive Head Teacher



This week's stars are: **Florence.P (YrR), Isabella (Yr3), Logan (Yr4) & Skye (Yr6)**

Kindness certificates awarded to:



**Rosie.M (Yr1) & Beau (Yr2)**



Handwriting Award: **Nelly (YrR) & Daniella (Yr3)**

**Well done everybody**

### Next week ....

#### Monday

Music lessons (individual pupils)

Class 3 Gardening club: 4pm pick up (bookings only)

#### Tuesday

Years R & 1: PE day

#### Friday

WNAT Big Fun Run: All pupils to wear PE kit

Years 2 to 6: PE day

Years 1 to 6 Football Club: 4:15pm pick up (bookings only)

### Attendance

(Thursday to Thursday)

Reception: 95.24%

Year 1: 98.86%

Year 2: 100%

Year 3: 90.91%

Year 4: 97.4%

Year 5: 92.05%

Year 6: 100%

Whole school: 96.15%

Congratulations Years 2 & 6

### Diary dates (subject to change)

⇒ **WNAT Concert (music pupils only):** Wednesday 21st July

⇒ **Last day of school:** Wednesday 21st July. School will re-open on Monday 6th September 2021.

Tel: 01553 828680 Email: office@walpolecrosskeysprimary.co.uk  
Governors: chairofgov@clenchwartonprimary.co.uk  
www.walpolecrosskeysprimary.co.uk



## Next week's menu:

<b>LUNCHTIME CO</b> <b>Week 3</b> <b>Commencing • 26<sup>th</sup> April • 17<sup>th</sup> May</b> <b>• 14<sup>th</sup> June • 5<sup>th</sup> July</b>					
	Monday	Tuesday	Wednesday	Thursday	Friday
<b>Packed Lunch</b>	Cheese Sandwich Packed Lunch (G) (W) (SU) (MK)	Ham Sandwich Packed Lunch (G) (W) (SU)	Tuna Sandwich Packed Lunch (G) (W) (E) (F) (SU)	Cheese Sandwich Packed Lunch (G) (W) (MK) (SU)	Ham Sandwich Packed Lunch (G) (W) (S)
<b>Menu choice 1</b>	Bangers and Mash (G) (W) (SU)	Chicken Goujon Wrap with Potato Wedges (G) (W)	Sausage Roll served with Herby Diced Potatoes and Vegetables (G) (W) (MK) (SU)	Roast Chicken with Roasted Potatoes and Gravy (G) (W) (E) (MK)	Fish Fingers served with Chips & Garden Peas or Beans (G) (W) (F)
<b>Menu choice 2</b>	Quorn Sausage and Mashed Potato (G) (E) (W) (MK)	Vegetable Goujon Wrap with Potato Wedges (G) (W)	Macaroni Cheese with Garlic Bread (G) (W) (MK)	Quorn Roast with Roasted Potatoes and Gravy (G) (W) (E) (MK)	Vegetable Nuggets served with Chips & Garden Peas or Beans (G) (W)
<b>Menu choice 3</b>	Selection of Fresh Vegetables and Salad	Selection of Fresh Vegetables and Salad	Selection of Fresh Vegetables and Salad	Selection of Fresh Vegetables and Salad	Selection of Fresh Vegetables and Salad
<b>Desserts</b>	Chocolate Crunch (G) (W) (E)	Lemon Muffin (G) (W) (E)	Gingerbread Biscuit (G) (W)	Carrot Cake (G) (W) (E)	Vanilla Cookie (G) (W)

Allergen Key : (G) Gluten (W) Wheat (B) Barley (E) Egg (MK) Milk (D) Dairy (F) Fish (MU) Mustard (SE) Sesame (SO) Soya (C) Celery (L) Lupin

If your child would like a school lunch please order for the whole week using **ParentPay**, the deadline for orders is midnight on Sunday. If you miss the deadline please email the office by 9am on Monday with your child's choices for the week.

Thank you

All pupils are invited to take part in this event. Please send your child to school wearing their full PE kit on Friday 9th July. Any donations can be made via the link at the bottom of this page. Thank you for your support.



# **FUN RUN**



## **SUPPORTING & RAISING MONEY FOR**



**The Queen Elizabeth  
Hospital King's Lynn**  
NHS Foundation Trust

## **COVID 19 SUPPORT FUND & TO SAY THANK YOU!**

## **FRIDAY 9TH JULY 2021**

## **TO SPONSOR US PLEASE VISIT:**

<https://www.justgiving.com/fundraising/WNAT-Fun-Run>



Launches on  
10th July!



Summer Reading Challenge 2021

# WILD WORLD Heroes



Presented by The Reading Agency.  
Delivered in partnership with libraries

Keep the kids busy during the summer holidays  
with our wild world themed reading challenge.  
It's all free and kids can earn themselves  
a medal by reading 6 books of their choice.

Sign up for your free pack  
at your local library and get  
ready to collect your stickers  
to solve the Summer Reading  
Challenge clues!

**YES!**

your local library is  
back open again and  
we welcome all families  
and new members!

Plus we've got loads of exciting wildlife themed  
online events taking place throughout the holidays.  
To find out more about the challenge contact your  
local library or visit: [www.norfolk.gov.uk/libraries](http://www.norfolk.gov.uk/libraries)

**borrow discover connect**



Norfolk County Council has a

## SCHOOL CROSSING PATROL VACANCY

Walpole Cross Keys Primary School  
TEMP 12 MONTH CONTRACT

5 hours weekly from 8.25am to 8.55am  
& 2.50pm to 3.20pm during  
term times

**Training & uniform provided.**

For any queries about the role please contact  
Adrian Buck, School Crossing Patrol Manager at  
[adrian.buck@norfolk.gov.uk](mailto:adrian.buck@norfolk.gov.uk) or on 07766 800621

To apply online please visit the below website:  
[www.norfolk.gov.uk/norfolkfireservicejobs](http://www.norfolk.gov.uk/norfolkfireservicejobs)

The closing date  
for applications is

**Sunday 4th July 2021**



**Norfolk**  
County Council



**HOCKEY HEROES**

**A HERO IN EVERY KID**

**A FUN WELCOMING PROGRAMME FOR ALL CHILDREN AGED 5 - 8 TO TRY HOCKEY AND TO DEVELOP BOTH THEIR PHYSICAL AND CHARACTER SUPERPOWERS**

**FIND OUT MORE: [hockeyheroes.co.uk](http://hockeyheroes.co.uk)**

**Starting at Pelicans Hockey Club - Lynnsport  
On Sat 4th September for 8 weeks  
24 places available - sign up quick!**

ENGLAND HOCKEY

## Term Dates 2021-2022 – Trust Primary Schools

September 2021						
M	T	W	T	F	S	S
		1	2	3	4	5
6	7	8	9	10	11	12
13	14	15	16	17	18	19
20	21	22	23	24	25	26
27	28	29	30			

October 2021						
M	T	W	T	F	S	S
				1	2	3
4	5	6	7	8	9	10
11	12	13	14	15	16	17
18	19	20	21	22	23	24
25	26	27	28	29	30	31

November 2021						
M	T	W	T	F	S	S
1	2	3	4	5	6	7
8	9	10	11	12	13	14
15	16	17	18	19	20	21
22	23	24	25	26	27	28
29	30					

December 2021						
M	T	W	T	F	S	S
		1	2	3	4	5
6	7	8	9	10	11	12
13	14	15	16	17	18	19
20	21	22	23	24	25	26
27	28	29	30	31		

January 2022						
M	T	W	T	F	S	S
					1	2
3	4	5	6	7	8	9
10	11	12	13	14	15	16
17	18	19	20	21	22	23
24	25	26	27	28	29	30
31						

February 2022						
M	T	W	T	F	S	S
	1	2	3	4	5	6
7	8	9	10	11	12	13
14	15	16	17	18	19	20
21	22	23	24	25	26	27
28						

March 2022						
M	T	W	T	F	S	S
	1	2	3	4	5	6
7	8	9	10	11	12	13
14	15	16	17	18	19	20
21	22	23	24	25	26	27
28	29	30	31			

April 2022						
M	T	W	T	F	S	S
				1	2	3
4	5	6	7	8	9	10
11	12	13	14	15	16	17
18	19	20	21	22	23	24
25	26	27	28	29	30	

May 2022						
M	T	W	T	F	S	S
						1
2	3	4	5	6	7	8
9	10	11	12	13	14	15
16	17	18	19	20	21	22
23	24	25	26	27	28	29
30	31					

June 2022						
M	T	W	T	F	S	S
		1	2	3	4	5
6	7	8	9	10	11	12
13	14	15	16	17	18	19
20	21	22	23	24	25	26
27	28	29	30			

July 2022						
M	T	W	T	F	S	S
				1	2	3
4	5	6	7	8	9	10
11	12	13	14	15	16	17
18	19	20	21	22	23	24
25	26	27	28	29	30	31

August 2022						
M	T	W	T	F	S	S
1	2	3	4	5	6	7
8	9	10	11	12	13	14
15	16	17	18	19	20	21
22	23	24	25	26	27	28
29	30	31				

Key: White dates – school open to pupils  
Orange dates – pupil holiday  
Purple dates – staff training day  
Red dates – bank holiday

Staff training days are – Thursday 2nd September, Friday 3rd September, Friday 22nd October and Tuesday 4th January as whole training days.  
Monday 25th July is disaggregated.