

Walpole Cross Keys
Mixed Age Class: Years 2, 3 & 4
Knowledge Organisers
1st Autumn Term

Science
Geography
History
Art / DT
PHSE

Knowledge Organiser- Living things and their Environment - Year 2

Key Vocabulary	Definition
Living	Something that is alive
Habitat	A place where particular
Germination	Stage of plant growth when the seed begins to sprout
Mature	When a plant has reached its adult (flowering) stage
Adapt	To change to fit in with the habitat
Environment	The surroundings of where an animal or plant lives
Survive	To stay alive
Damage	To hurt or harm a person or a place
Specific habitat names, animals and plants as required each lesson.	

Rainforest



Desert



Meadow



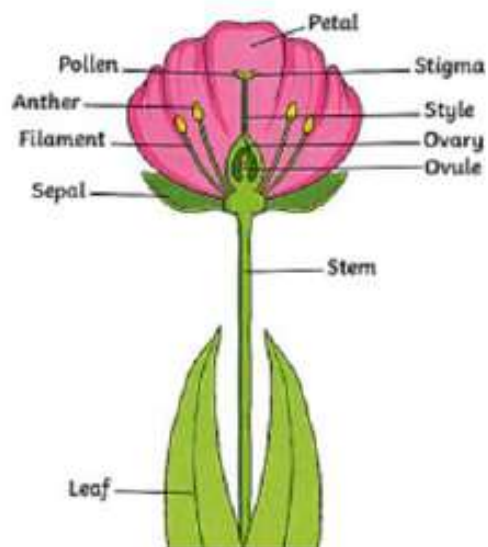
Underground



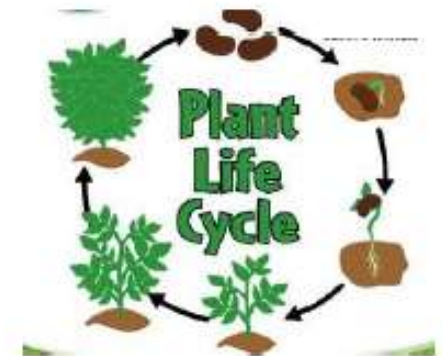
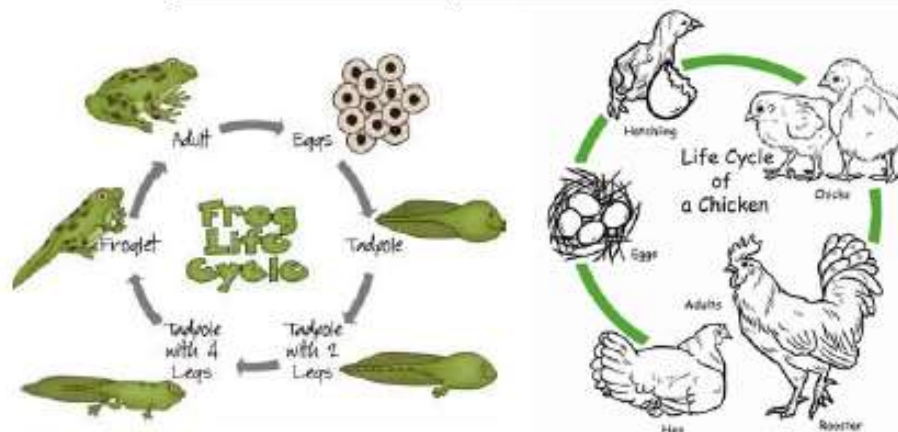
Knowledge Organiser – Cycles in Nature – Science - Year 3



Parts of a Plant



Key Vocabulary	Definition
reproduce	The stage of living things creating new life e.g. having a baby.
fertilise	When the male and female parts of a living thing have created a new life.
anther	The part of a plant that contains the pollen.
pollen	The male part of a plant.
ovule	The female part of a plant.
mature	When a plant or animal becomes an adult.
ripen	When a baby plant becomes an adult, or a fruit/vegetable is ready to fall off the adult plant.
migrate	Moving south for the winter to warmer weather.
sprout	When a seed has started to grow, you can see roots and leaves forming.
hatchling	A baby animal that has hatched from an egg.
frogspawn	Frog eggs.



Knowledge Organiser - Maps and Globes – Geography - Year Two

Key Vocabulary	Definition
Map	A picture that shows where things are located
Globe	A globe is a 3-D representation of the world
Navigate	To plan and then travel along a route
Location	The place where something is
Direction	The position towards which something travels
Ordnance Survey	An organisation that produces maps in the UK
Symbols	Small pictures that are used on maps to represent geographical features.
Scale	Maps use scale to show how far apart places are
Equator	An imaginary line around the Earth that divides the Northern Hemisphere from the Southern Hemisphere

A Globe



A Map

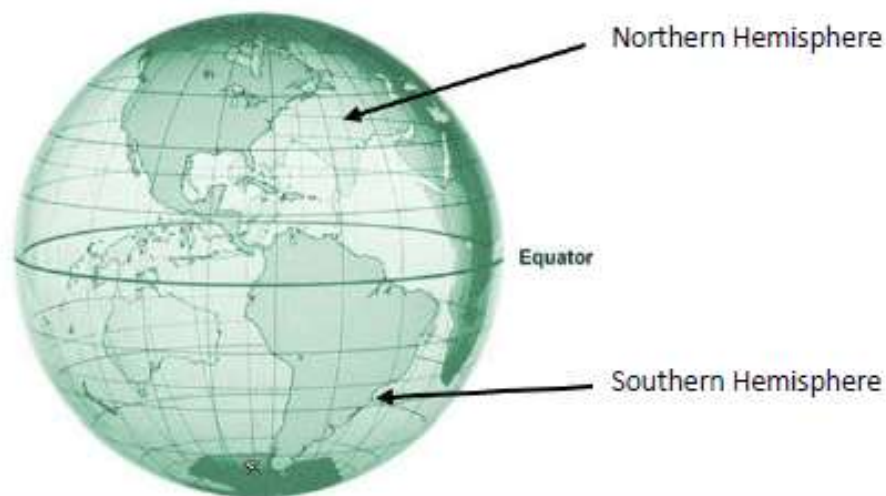


A Compass

North





South



Knowledge Organiser - Spatial Sense - Geography - Year 3

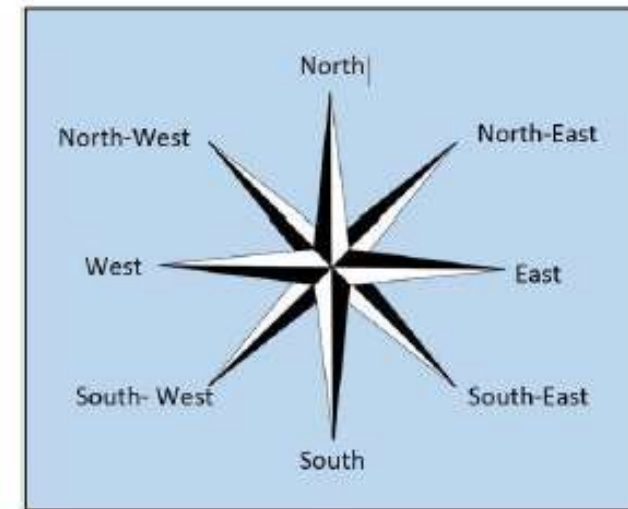
Key Vocabulary	Definition
Eight-point compass	A tool used for navigation, shows the following directions; north, north-east, east, south-east, south, south west, west and north west.
Grid reference	A set of information (often a letter and a number) that locates a place on a map.
Symbols	Small simple pictures that represent different things on a map.
Key	A key gives information about the symbols included on a map.
Human features	Man-made features of an area, for example, buildings, bridges and roads.
Physical features	Natural features of an area, for example, rivers, hills, valleys.

Contrasting Physical Geography

Australia	United Kingdom
	




Eight Point Compass



Year 2 Knowledge Organiser - History – Ancient Egypt – Year 2

Key Vocabulary	Definition
River Nile	A river, which flows through the continent of Africa. It is the longest river throughout the world.
Black Land	The land either side of the River Nile, which the soil turns black. It is full of rich nutrients to help plants grow.
Irrigation	The supply of water, which helps land or crops, grow.
Archaeology	A person who studies history by looking for things people in the past have left behind. Archaeologists look at objects (artefacts), people and places (sites) from a long time ago.
Pharaohs	Pharaohs were the King or Queen of Egypt. A Pharaoh was the most important and powerful person in kingdom. They were the head of the government and the highest priest of every temple.
Artefacts	An object made by humans, typically one of cultural or historical interest

Pharaohs	
Nefertiti	
Tutankhamun	
Rameses II	

Map of Egypt



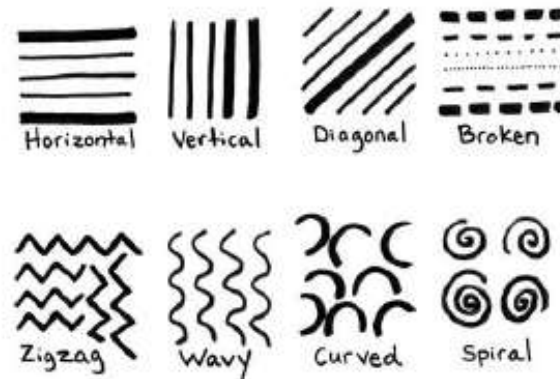
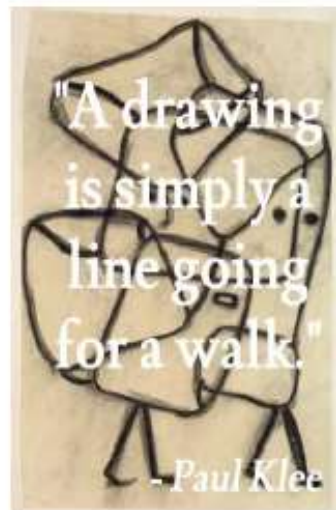
Howard Carter



- Born in 1874 in Norfolk, England.
- Discovered the tomb of Tutankhamun with Lord Carnarvon.

Knowledge Organiser- Landscape and Symmetry - Visual Arts - Year Three

Key Vocabulary	Definition
sketch	A rough drawing or painting, possibly to be looked at to be able to complete a finished drawing or painting.
Continuous line	A line which does not end. It keeps going.
Form	Where an artist shows in a drawing or painting that an object is 3d rather than flat or 2d.
print	Where an artist has created an image on a block, put paint or ink on the block and then placed paper on top of the block. The image on the paper is the print.
woodblock print	Where a print is made by carving lines in a block of wood.



Art	Artist/Title
	Henry Moore, Drawing from Shelter Sketchbook, 1940
	Katsushika Hokusai, <i>The Great Wave off Kanagawa</i> , 1829-33

Knowledge Organiser – PSHE – Being Me in My World - Year Three

Vocabulary	
Acknowledge	To accept, admit, or recognise something, or the truth or existence of something.
Affirm	To state something as true. To show your support for an opinion or idea.
Solution	The answer to a problem.
Fairness	The quality of treating people equally or in a way that is right or reasonable.
Personal goal	Set by an individual to achieve objectives that will 'better' themselves.
Co-operate	To act or work together for a particular purpose, or to be helpful by doing what someone asks you to do.
Valued	Useful and important.



Learning Objectives	
PSHE	I recognise how my behaviour can affect how others feel and behave.
Social & Emotional	I understand why it is important to have rules and how that helps me and others in my class learn. I will explain why it is important to feel valued.

Reflective questions
Ask me this...
Do you know how and when you learn the best?
Why is it important to feel valued/ that we belong?
What rights do we have in school?

